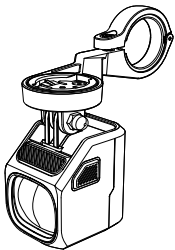


EN

MAGICSHINE®



APP PAIRING NAME: M2-B0
EVO 1700
USER MANUAL

⚠ WARNING

1. To prevent inadvertent switching on, please keep the light unit in lockout mode before transport or storage.
2. DO NOT disassemble, modify, remanufacture, puncture, or damage the device or batteries.



IN THE BOX



EVO 1700



Handlebar
out-front mount



MJ-6508 remote
control (incl. strap)



Nylon shim
(28mm/
32mm/35mm)



Screw



USB-C
charging cable



2mm/3mm
hex key

OPERATING INSTRUCTIONS

HEADLIGHT BUTTON OPERATION:

ON/OFF: Press and hold the button for 1 second

ADJUST BRIGHTNESS: When the light is on, click the button to change brightness level. The output brightness will cycle through LOW→MEDIUM→HIGH.

CHANGE MODE: Double click the button to change between low beam and high beam. (Note: The Day flash and Night flash can only be accessed through the remote control.)

CHECK BATTERY LEVEL: Click the button

LOCK/UNLOCK: When the light is off, press and hold the button for 3 seconds to enter lockout mode. To unlock the light, you can press and hold the button again for 3 seconds or charge the light.

REMOTE CONTROL INSTRUCTIONS

Note:

1. Before first use, please open the remote's battery compartment, remove the insulating spacer, reinsert the battery, then cover the battery compartment, and the indicator on the remote will flash blue.
2. The remote control will enter sleep mode if the light is turned off for more than 48 hours without any operation. Click the light's button to activate it or long-press the light's button to turn it on, and the remote control can work normally.

REMOTE CONTROL PAIRING:

Turn on the light, press and hold the "○" "□" buttons on the remote for about 10 seconds until the indicator alternately flashes blue to enter pairing mode. Then, put the remote close to the light button until the indicators on the remote and light unit are constantly blue for 2 seconds, confirming a successful pairing.

REMOTE CONTROL OPERATION:

ON/OFF: Press and hold the "○"/"□" button for 1 second

ADJUST BRIGHTNESS: Click the "○" button

CHANGE MODE: Double click the "○" button

FLASH MODE: Double click the "□" button

FULL OUTPUT MODE (1700LM): Click the "□" button to go into full output mode and click the "○"/"□" button to return to the previous mode.

CHARGING / BATTERY INDICATOR

Standard charging time approx.

5 hrs (5V 1A)

Charging: Flashing red

Fully charged: Constant green



BATTERY INDICATOR

When the light is off, click the button to display the remaining battery level for 3 seconds.

100%-21%: Constant green

20%-11%: Constant red

10%-1%: Flashing red

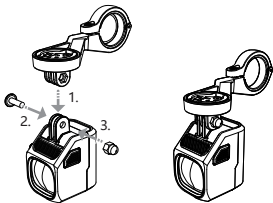
OUTPUT / RUNTIME

LOW BEAM	LOW	200LM	11H
	MEDIUM	400LM	5.5H
	HIGH	800LM	3H
HIGH BEAM	LOW	400LM	6H
	MEDIUM	800LM	3H
	HIGH	1700LM	2H
FLASH MODE	DAY FLASH	0~1700LM	5H
	NIGHT FLASH	400~1700LM	3.5H

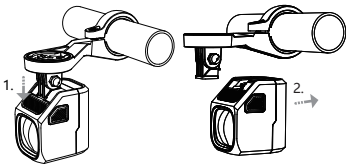
*All data are measured in accordance with ANSI/NEMA FL 1-2009. The test was conducted at a temperature of 25°C and a wind speed of 25 km/h. The runtime may vary depending on external temperature and ventilation conditions, and these deviations may affect the result of testing.

HOW TO INSTALL / REMOVE

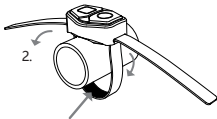
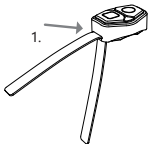
1. INSTALL THE OUT-FRONT MOUNT



2. REMOVE THE OUT-FRONT MOUNT



3. REMOTE CONTROL MOUNTING



Adhesive velcro hook side up

